



Pupil Premium Policy

Approved by TCES Operational Board on behalf of
Thomas Keaney, CEO and Schools' Proprietor

Date of next formal review: April 26

This policy applies to all The Complete Education Solution (TCES)
Schools and services.

Contents

Aims	3
Legislation and guidance	3
Purpose of the grant	3
Use of the grant	3
Objectives for use	4
Eligible pupils	5
Roles and responsibilities	7
Steps to success	9
Monitoring arrangements	9
Pupil Premium Flow Chart – Appendix 1	10
Pupil Premium Claim Form – Appendix 2	11

1. Aims

This policy aims to:

- Pupil Premium is additional funding that schools can receive from the Government. This funding helps schools to close the attainment gap between disadvantaged pupils and their peers. Government statistics show the attainment gap has reduced since the introduction of Pupil Premium. The Premium is funding that is given for pupils from low-income families, pupils in care, or previously in care and for those pupils who have parents serving in the armed forces
- The Government believes that Heads of School and school leaders should decide how to use the pupil premium. They are held accountable for the decisions they make through:
 - the performance tables which show the performance of disadvantaged pupils compared with their peers.
 - The Ofsted inspection framework, under which inspectors focus on the attainment of pupil groups, and particularly those who attract pupil premium.
 - The reports for parents that schools have to publish online.

2. Legislation and guidance

This policy is based on the Pupil premium: allocations and conditions of grant 2025 to 2026 - GOV.UK (www.gov.uk), published by the Education and Skills Funding Agency. It is also based on guidance from the Department for Education (DfE) on [Pupil premium: virtual school heads' responsibilities - GOV.UK](#) and the [Service pupil premium \(SPP\): information for schools - GOV.UK](#)

3. Purpose of the grant

The pupil premium grant is additional funding allocated to schools to raise the attainment of disadvantaged pupils and support pupils with parents in the armed forces.

The school will use the grant to support these groups, which comprise pupils with a range of different abilities, to narrow any achievement gaps between them and their peers.

We also recognise that not all pupils eligible for pupil premium funding will have lower attainment than their peers. In such cases, the grant will be used to help improve pupils' progress and attainment so that they can reach their full potential.

4. Use of the grant

- Disadvantaged pupils are 18 months to 2 years behind non-disadvantaged children by the time they sit their GCSEs; are four times as likely to have mental health difficulties and over a quarter of pupils eligible for free school meals are identified with special educational needs.
- The school will use the additional funding to address any underlying inequalities between children eligible for Pupil Premium and others.
- The school will continue to monitor the impact of the use of Pupil Premium against the above objectives, this will be reviewed at the end of summer term.
- The spending strategy is informed by research evidence, referring to a range of sources, including the [guide published by the Education Endowment Foundation \(EEF\)](#).

5. Objectives for the use of Pupil Premium at TCES:

The Pupil Premium allocated to our pupils will be used to provide additional educational and attendance support, amongst others, to improve the progress and to raise the standard of achievement for these pupils, this includes:

- Bespoke specialist trips to support learning, attendance and behaviour.
- Sports events and competitions i.e. Celebration Day and cross company sporting events to enhance inclusion.
- Additional support to improve attendance.
- Coffee morning to engage parents to improve pupil outcomes.
- Breakfast club and fruit for the day.
- Wellbeing incentives for pupils – e.g. Wake Up and Shake Up
- Family support workers to engage the family as a whole and improve outcomes.
- Leadership courses including peer mentoring.
- Activity clubs and competitions.
- Educational platforms to improve progress in Maths and English.

This is not an exhaustive list.

The funding will be used to support and narrow the gap between the achievement of these pupils and their peers. Research evidence shows that children who are disadvantaged can experience a range of challenging social and economic conditions that include:

- Living in overcrowded or inhabitable living conditions that can negatively affect personal and cognitive development.
- Unable to access basic nutritional items such as fruit and vegetables that are critical for healthy brain development.
- Greater exposure to unhealthy lifestyles such as drinking and smoking.
- Insecure attachment that leads to pupils having negative views about themselves that leads to worse resilience, behavioural problems, and poor school attendance.
- Adverse childhood experiences that can act as a barrier to concentration and learning.
- Less opportunity to partake in enrichment opportunities and academic support such as home computers and tuition.
- May come from families that underestimate the impact they have on their child's development and therefore learning leading to lower career aspirations.
- Use other evidence such as learning from what works in school to inform decisions on pupil premium spending.
- Address a wide range of needs and take group and individual needs into account.
- Engage with parents to take their views on the needs of their child into account.

The school will continue to monitor the impact of the use of Pupil Premium against the above objectives, this will be reviewed at the end of summer term.

We will publish information on the school's use of the pupil premium on the school website in line with the requirements set out in the DfE's guidance on what schools should publish online.

The school will provide a three-year strategy plan and action plan relating to the intent, implementation and impact of the pupil premium spend.

6. Eligible pupils

The pupil premium is allocated to the school based on the number of eligible pupils who attend TCES schools.

Eligible pupils fall into the categories explained below:

6.1 Ever 6 free school meals

Pupils recorded in the most recent October school census who are known to have been eligible for free school meals at any point in the last 6 years (as determined by the DfE's latest conditions of grant guidance).

This includes pupils first known to be eligible for free school meals in the most recent October census.

It does not include pupils who received universal infant free school meals but would not have otherwise received free lunches.

Pupils recorded in the most recent January school census who are known to have been eligible for free school meals at any point in the last 6 years (as determined by the DfE's latest conditions of grant guidance).

6.2 Looked after children

Pupils who are in the care of, or provided with accommodation by, a local authority in England or Wales for at least 1 day have a portion of the grant as pupil premium plus. Allocations will be provisionally based on the children looked-after data return in March of the previous year and then confirmed in December of the current year based on the children looked-after data return in March of the current year. Pupil premium plus allocations are based on the eligibility of looked after children and are managed by the local authority virtual school head (VSH).

6.3 Post-looked after children

Pupils recorded in the most recent October census who were looked after by an English or Welsh local authority immediately before being adopted, or who left local authority care on a special guardianship order or child arrangements order.

Pupils recorded in the most recent January census who were looked after by an English or Welsh local authority immediately before being adopted, or who left local authority care on a special guardianship order or child arrangements order.

6.4 Ever 6 service children

Pupils recorded in the most recent October census:

- With a parent serving in the regular armed forces.
- Who have been registered as a 'service child' in the school census at any point in the last 6 years (as determined by the DfE's latest conditions of grant guidance), including those first recorded as such in the most recent October census.
- In receipt of a child pension from the Ministry of Defence because one of their parents died while serving in the armed forces.

Pupils recorded in the most recent January census:

- With a parent serving in the regular armed forces.

- Who have been registered as a 'service child' in the school census at any point in the last 6 years (as determined by the DfE's latest conditions of grant guidance), including those first recorded as such in the most recent January census.
- In receipt of a child pension from the Ministry of Defence because one of their parents died while serving in the armed forces.

7. Roles and responsibilities

7.1 Headteacher and senior leadership team

The headteacher and senior leadership team are responsible for:

- Keeping this policy up to date and ensuring that it is implemented across the school.
- Ensuring that all school staff are aware of their role in raising the attainment of disadvantaged pupils and supporting pupils with parents in the armed forces.
- Planning pupil premium spending and keeping this under constant review, using an evidence-based approach and working with virtual school heads where appropriate.
- Monitoring the attainment and progress of pupils eligible for the pupil premium to assess the impact of the school's use of the funding.
- Reporting on the impact of pupil premium spending to the governing board on an ongoing basis.
- Publishing the school's pupil premium strategy on the school website each academic year, as required by the DfE.
- Publishing information on the school's use of the pupil premium on the school website, as required by our funding agreement and in line with guidance from the DfE.
- Providing relevant training for staff, as necessary, on supporting disadvantaged pupils and raising attainment.

7.2 Governors

The governing board is responsible for:

- Ensuring the school is using pupil premium funding appropriately, in line with the rules set out in the conditions of grant.
- Monitoring the attainment and progress of pupils eligible for the pupil premium, in conjunction with the headteacher, to assess the impact and effectiveness of the school's use of the funding.
- Monitoring whether the school is ensuring value for money in its use of the pupil premium.
- Challenging the headteacher to use the pupil premium in the most effective way.

- Setting the school's ethos and values around supporting disadvantaged members of the school community

7.3 Other school staff

All school staff are responsible for:

- Implementing this policy on a day-to-day basis.
- Setting high expectations for all pupils, including those eligible for the pupil premium.
- Identifying pupils whose attainment is not improving in response to interventions funded by the pupil premium and highlighting these individuals to the senior leadership team.
- Sharing insights into effective practice with other school staff.

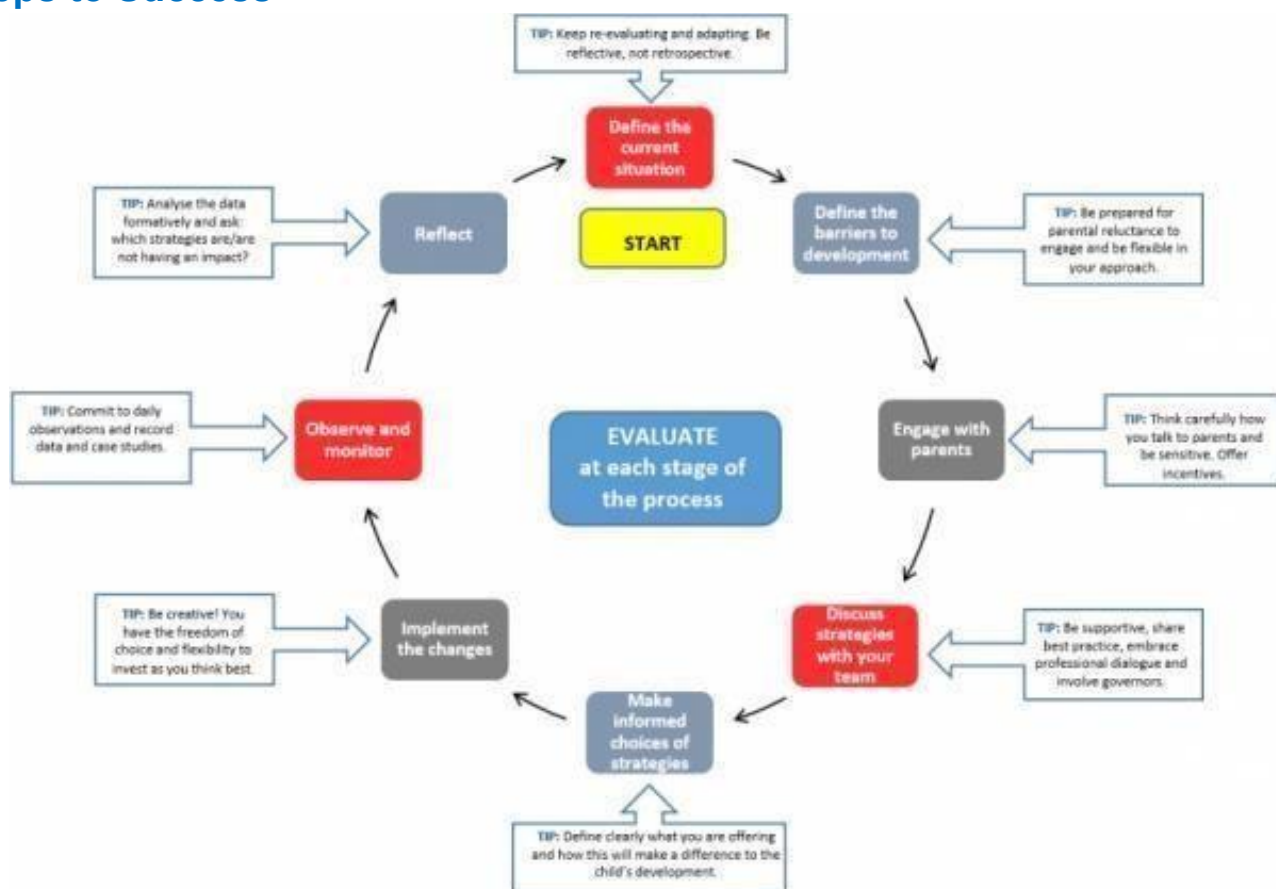
7.4 Virtual school heads

Virtual school heads are responsible for managing pupil premium funding for children looked after by a local authority and allocating it to schools. Their responsibilities include, but are not limited to:

- Identifying the eligible looked after children and informing the local authority.
- Making sure methods for allocating and spending ensure that looked after children benefit without delay.
- Working with each looked after child's educational setting to put together a personal education plan, agree how pupil premium funding will be spent to meet the need identified in this plan, and ensure the funding is spent in this way.
- Demonstrating how pupil premium funding is raising the achievement of looked after children

Virtual school heads are in charge of promoting the educational achievement of all the children looked after by the local authority they work for.

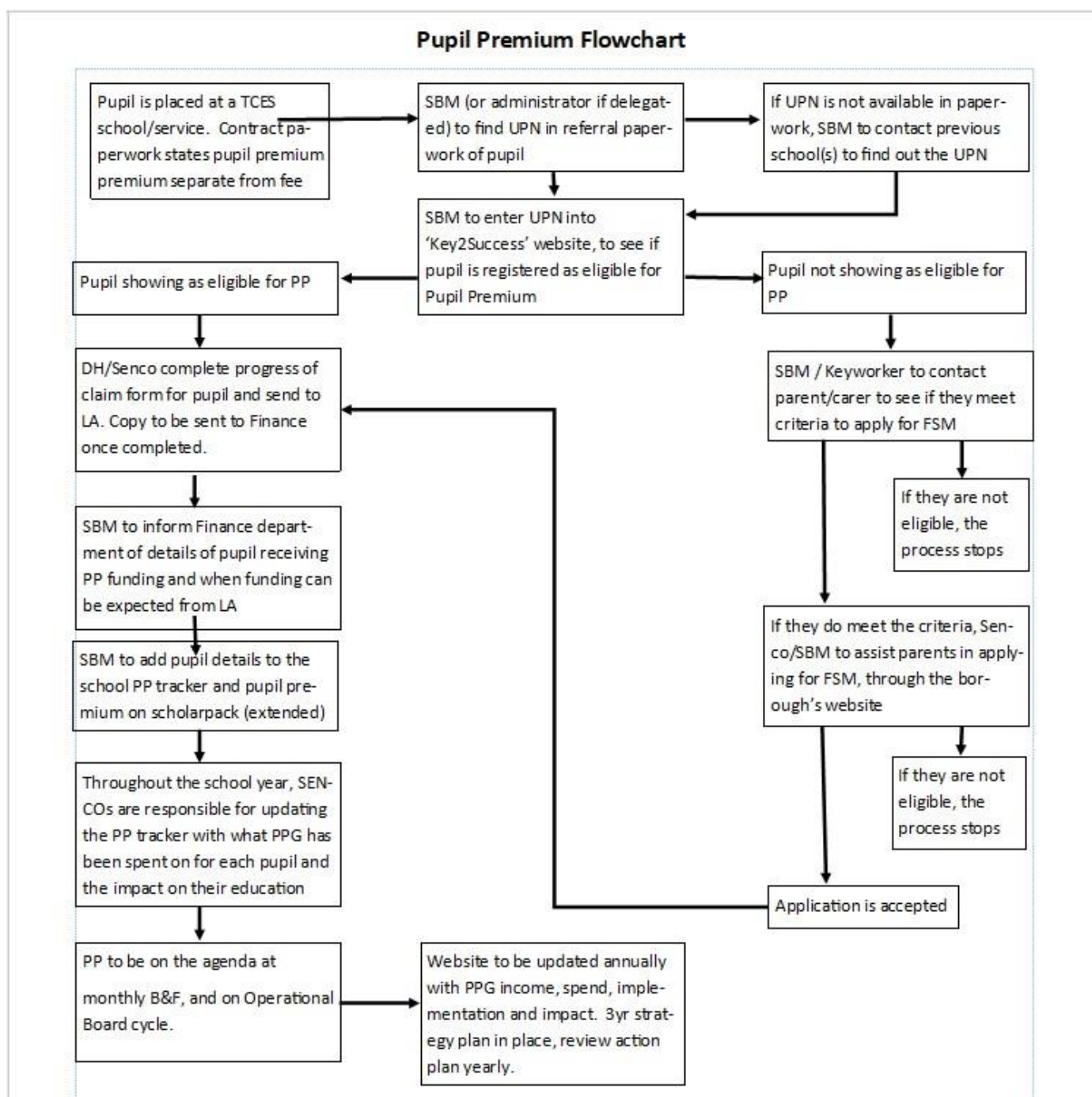
8. Steps to Success



9. Monitoring arrangements

This policy will be reviewed yearly.

10. Pupil Premium Flowchart – Appendix 1



11. Pupil Premium Claim Form – Appendix 2



Pupil Premium - Progress of Claim

Pupil Name:	Joe Bloggs			
UPN:	A465321			
Local Authority:	B&D			
Local Authority contact:	Jenni@B&D.co.uk			
School:	ELS			
Type of funding:	Pupil Premium	J	Pupil Premium Plus (CLA)	
Amount of funding allocated:				
Amount of funding received - confirmed:				
Name of Staff completing progress claim:				
Date:				
Signature:				

Intent of Pupil Premium spend:	<i>Enter here what you want your pupil to achieve, educational targets etc in relation to the strategy plan and action plan on website, what does success look like, what are your intended outcomes:</i>
Implementation:	<i>Enter here what resources you might use, over what timeframe, how these will support and develop skills, what is the plan to reach the outcomes/success criteria:</i>
Impact:	<i>What does success look like, outcomes, attainment:</i>